

# RISEAL™ SEALING SPACERS

## RITEKS SEALING SPACERS: MAXGUARD-X AND STREAMLINE-1 (PATENT PENDING)

Riteks' MaxGuard-X and StreamLine-1 (Patent pending) sealing spacers are engineered to deliver superior wellbore stability and loss mitigation. By forming a low-permeability membrane across the formation, these advanced systems help strengthen the wellbore, reduce fluid losses, and promote a higher top of cement (TOC). They are highly effective in preventing gas migration and improving cement bonding, while offering flexible mixing options—on-the-fly, batch mixing, or liquid transport. Fully compatible with surfactants, cements, and Riteks' complete line of lost circulation materials, including RadiLock Fibers and Legion-LCM, these spacers provide a reliable, field-ready solution for challenging well conditions.



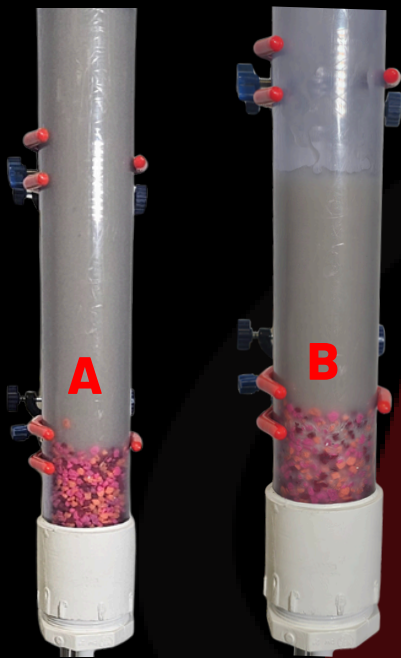
**SEAL STRONGER  
PREVENT LOSSES  
CEMENT SMARTER**



Scan to  
Request a  
Sample



**281.569.3500**  
[service@riteks.com](mailto:service@riteks.com)



**A:** Mixture of 12 ppb MaxGuard-X and 10 ppb Legion-LCM positioned for 100 psi pressure test through aquarium gravel.

**B:** Riseal™ Spacer MaxGuard-X and Legion-LCM creates a tight seal over the aquarium gravel, preventing leak-off.

**C:** Retrieved aquarium gravel from B showing a continuous membrane formed within the void spaces.



# MAXGUARD-X

**ULTIMATE SEAL, MAXIMUM PROTECTION**

RiSeal™ Spacer MaxGuard-X (MGX) has applications in primary cementing as a mechanically enhanced sealing spacer that boosts tops of cement by mitigating or eliminating losses. Our clients have also found MGX useful ahead of a remedial cement jobs where they have used it like a "backstop" to cement against. MGX is suitable for land and offshore operations.

Formulated for extreme well conditions, MGX delivers unmatched stability at temperatures up to 400°F (205°C), making it the optimal choice for challenging HPHT environments. With reduced loading requirements and advanced rheological properties, MGX maximizes cost-efficiency while maintaining premium sealing performance.

For severe to total losses, couple with Ritek's LCM Products (RadiLock Fibers, Legion-LCM, etc...) for healing and sealing capabilities

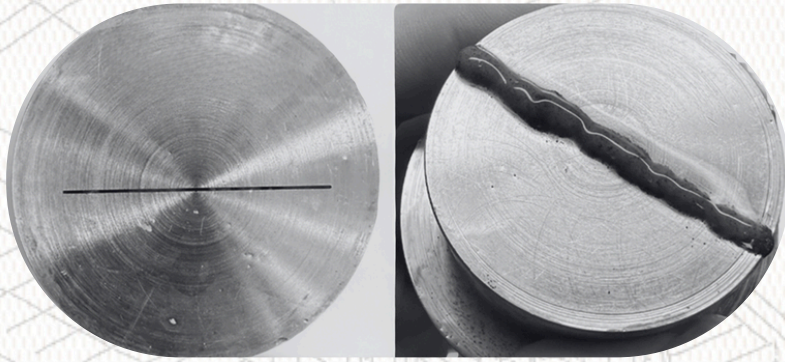
- Forms a seal to minimize filtrate invasion and effectively reduces/eliminates cement losses
- Enhances TOC & prevents cement fallback
- Provides wellbore strengthening & reduces incidents of induced losses downhole
- Enhances hole cleaning prior to cement placement, effectively removing gelled drilling fluids
- Compatible with virtually all cement systems, drilling fluids, surfactants, weighting agents, & LCM's
- Can be mixed with fresh water, sea water, or brines

**SCAN TO REQUEST  
A SAMPLE**

Phone: 281.949.4482  
Email: support@riteks.com  
Production & Lab Facility:  
11917 Cutten Rd.  
Houston, TX 77066



## 500 MICRON SLOT



**BEFORE**

**AFTER**

### **Shown on the left:**

An unweighted 8.5 ppg design of Riteks Riseal Spacer StreamLine-1 successfully sealed a 500-micron slot at 100 PSI—without any additional additives.

# STREAMLINE-1

## EFFICIENT SEALING, STREAMLINE COST

### PRODUCT DESCRIPTION

Introducing the first dual sealing spacer. This innovative design allows for lower Equivalent Circulation Densities without compromising stability or seal. Besides its mechanical enhancements, StreamLine-1 (SL1) boasts an innovative secondary matrix that promotes sealing on a whole new level for unparalleled performance at temps up to 350°F+ (177 °C+).

### ADVANTAGES

- Creates low permeability membrane across formation to strengthen wellbore and mitigates losses
- Helps achieve & maintain TOC, enhance cement bonding, and aid in prevention of gas migration
- Customizable rheology with excellent compatibility and elevated temperature stability (350°F+ / 177°C+)
- Combats slurry fallback after placement, preventing costly remedial jobs
- Fast hydration times allowing the ability to hydrate and run 'on the fly' and can be water wetted with freshwater or brines
- Compatible with all cements and most muds
- Enhances hole cleaning, effectively removing gelled drilling fluid and can be combined with most surfactant packages

### APPLICATIONS

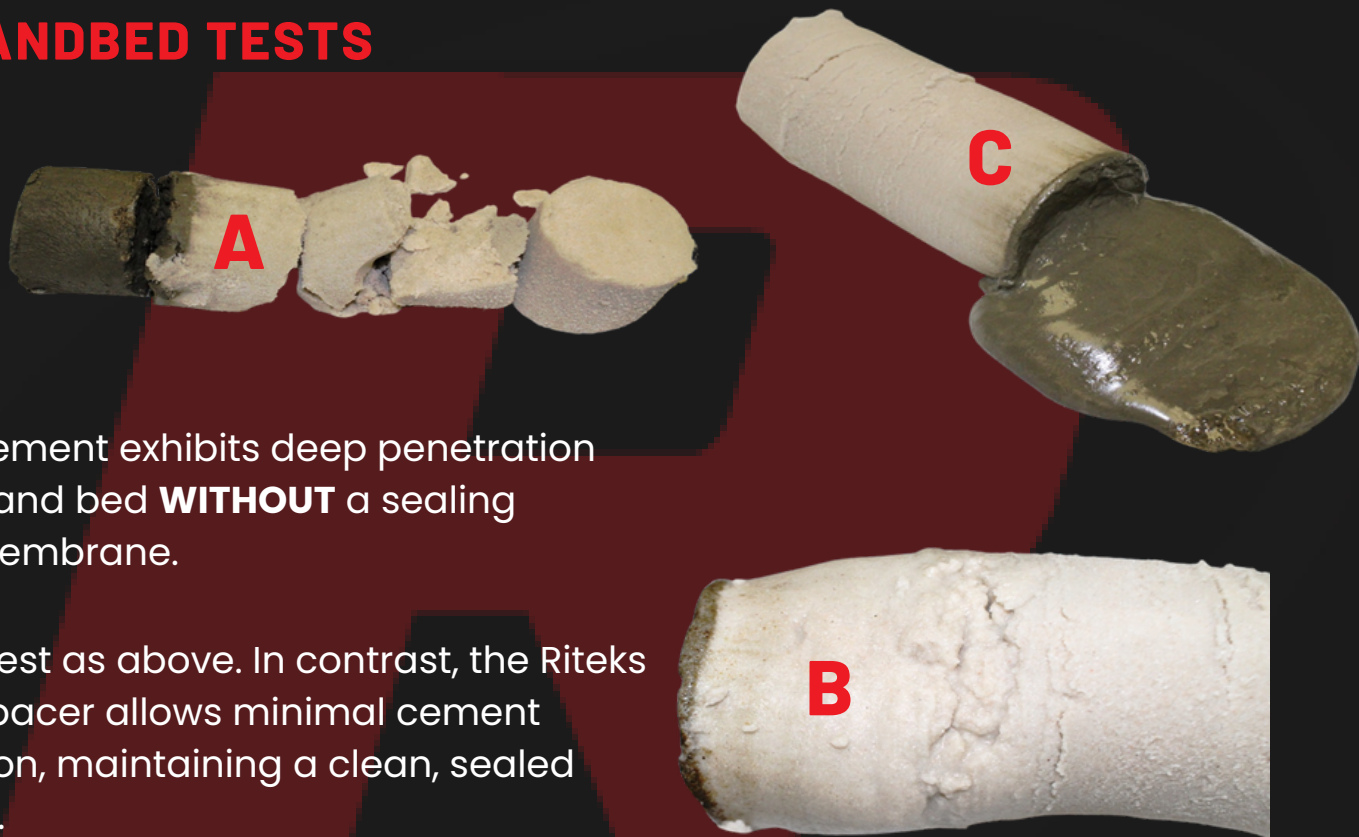
- Ideal for primary cementing with brine, WBM, or OBM
- Re-Entry and Refrac liners
- Ahead of Squeeze work
- Combine with Riteks LCM's (RadiLock 3mm, Legion-LCM, Saber-LCM, or Arsenal-LCM) to treat severe losses
- Instead of reactive spacers
- Has substantial benefits for strengthening weak or depleted zones



**SCAN TO REQUEST A SAMPLE**

# RISEAL™ SEALING SPACERS

## LAB SANDBED TESTS



**A:** Neat cement exhibits deep penetration into the sand bed **WITHOUT** a sealing spacer membrane.

**B:** Same test as above. In contrast, the Ritek sealing spacer allows minimal cement penetration, maintaining a clean, sealed sand bed.

**C:** Birdseye view of **B**.

Cement stayed in place with no leak-off, demonstrating effective sealing performance.



Scan to  
Request a  
Sample



281.569.3500  
service@riteks.com



**SEAL STRONGER  
PREVENT LOSSES  
CEMENT SMARTER**